

# LOWER YOUGH RIVER

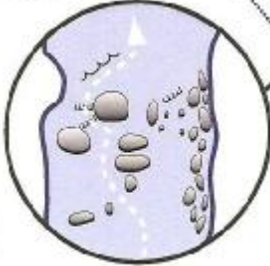
**Do not miss this sign!**  
Paddle hard to the left immediately after these rapids.



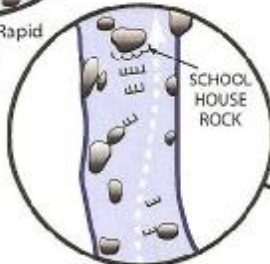
BRUNER RUN TAKEOUT



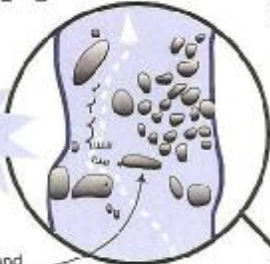
Bruner Run Rapid Class III



Maze or Stewarton Class III



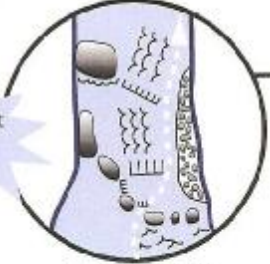
Schoolhouse Rapid Class III



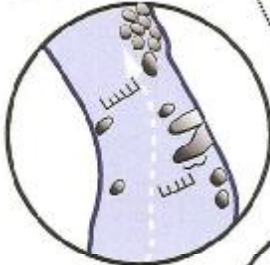
River's End Class III-IV

**DANGER!**  
Avoid wall and snaggletooth rocks

**DANGER!**  
Keep right to avoid violent hydraulics



Double Hydraulics Class III-IV



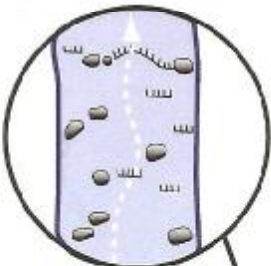
Swimmers Rapid Class III-IV



Bottle of Wine Class III

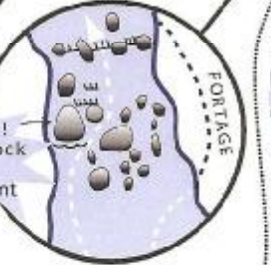
PORTAGE

**DANGER!**  
As an unguided boater on a Class III-IV river you are accepting responsibility for your own safety. You must be familiar with this river, whitewater boating and self-rescue skills.

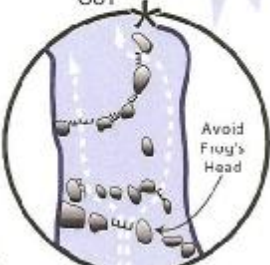


Dartmouth Rapid Class III

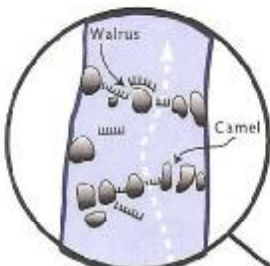
**DANGER!**  
Dimple Rock is an entrapment hazard!



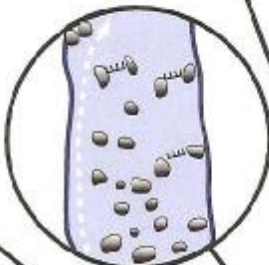
Dimple Rapids Class III-IV



Railroad Rapid Class III-IV



Camel & Walrus Rapid Class III



Tiddy Turn Rapid Class III

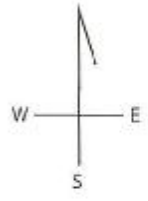
LOOP TAKE OUT

LOOP TAKE OUT



Entrance Rapid Class III-IV

LEGEND	
	Riffles: fast shallow water
	Hydraulic (hole)
	Standing Wave
	Caution: Possible Pin



Caution - Active Railroad

Bike Trail is the emergency exit

"The Loop" Ferndiff Peninsula

Otiopyle Falls

LAUNCH AREA

